

REGO 600 test

This program is compiled as test for REGO 600 interface described at page:
<http://rago600.sourceforge.net>.

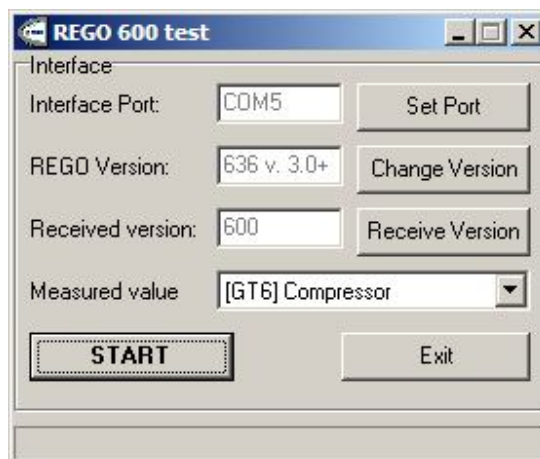
Do not forget, that this document and also included files are postcard-ware.

Purpose

This program is for testing only. It is focused to test interface and connection.

Operation

It is easy – program is controlled by buttons from top to down. There are information fields, which is disabled – because it is controlled by right hand side buttons.



Step 1:

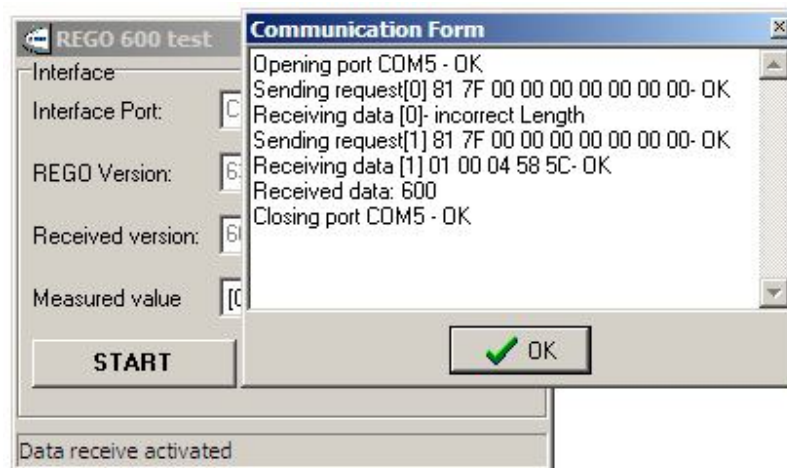
Select the serial port, where device connected by pressing [Set Port] button.
It will display list of available serial ports – select the correct one

Step 2:

Check version of your REGO. There are differences between REGO versions. The difference is somewhere in version 3. I have no details what is exact old and new version, but you can check it. Button [Change Version] switching between old and new version

Step 3:

First test of communication is button [Receive version]. If communication works fine, you will receive version 600.

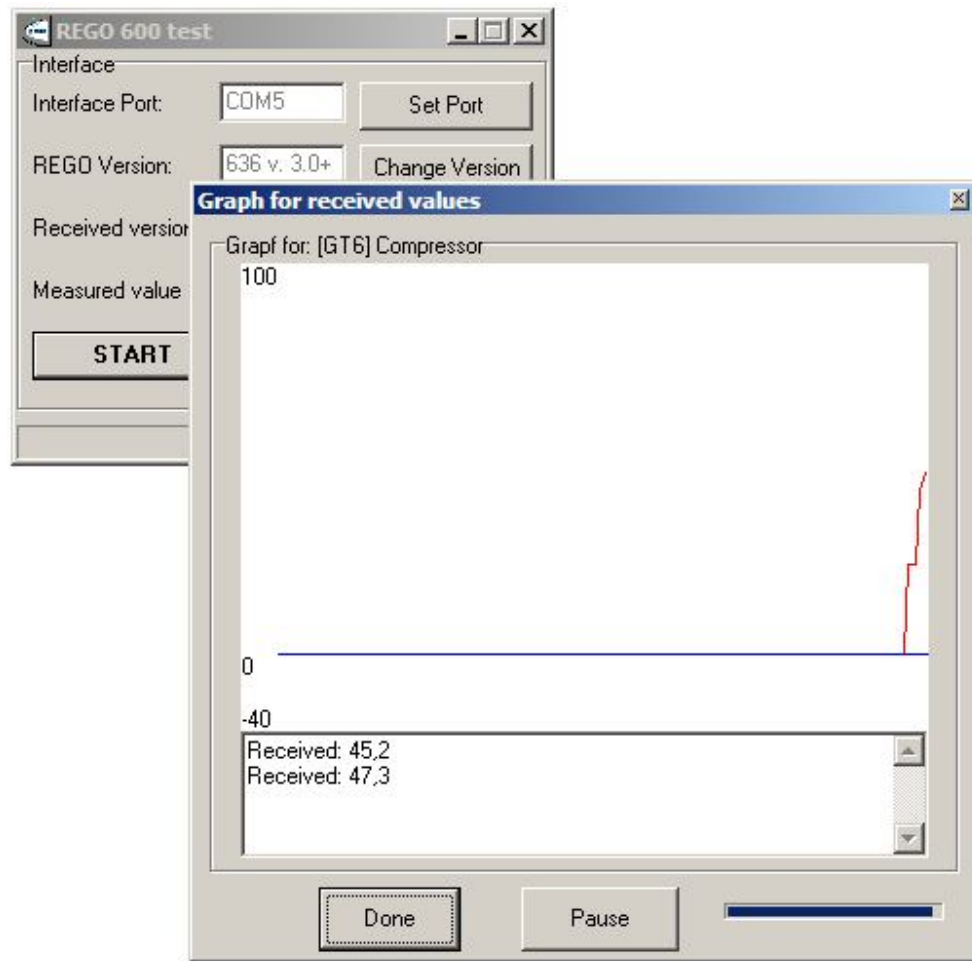


Step 4:

Select a value you want to display. There is list of few values produced by heat pump. The list is not complete, it is only representative subset.

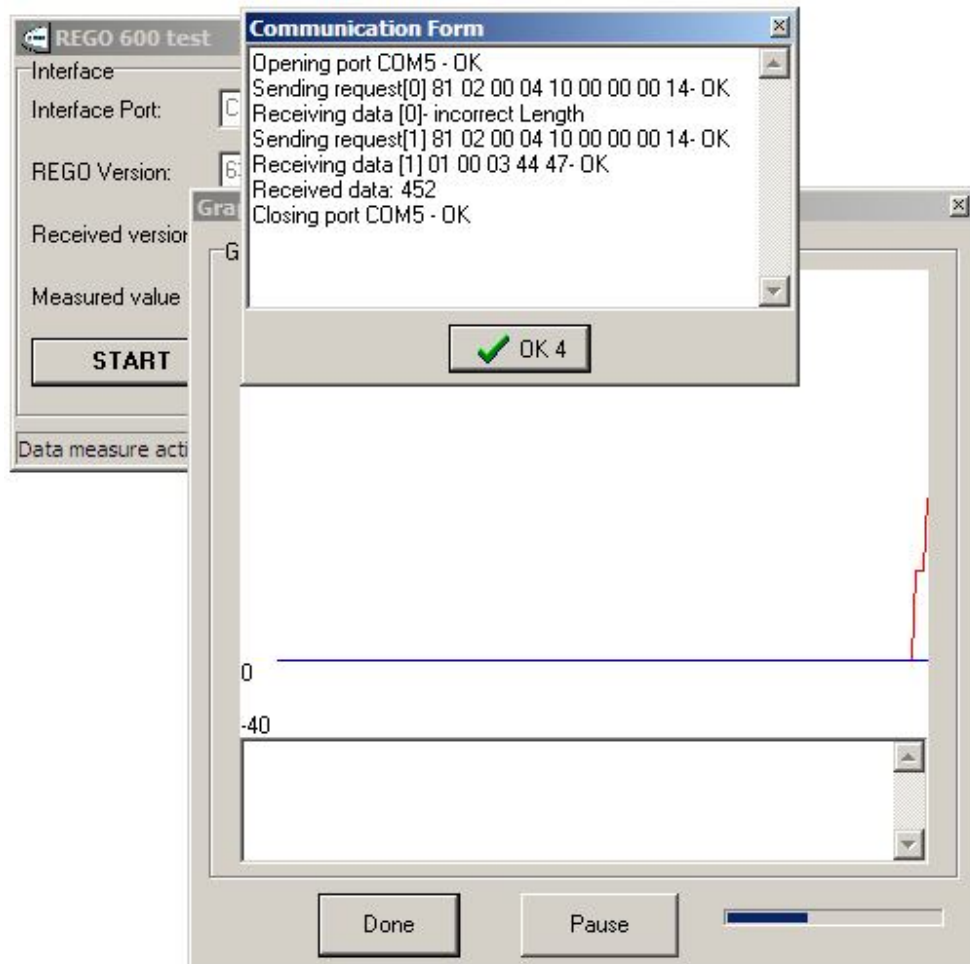
Step 5 (last)

Start of measuring. By pressing button [START] you will receive the window with graph of measured values.



Right down bar indicator presenting time to next measure. Measurement is every minute. Graph scale is fixed. There are also textbox with measured values. Textbox have 60 lines; it mean, you can check last hour of measurement.

When values are measured, you will see extra communication window:



That window has auto-close functionality and you must not care about that.

Appendix

That program is written in Borland Delphi. Parts of source code will not be published until somebody will start to cooperate on development and until somebody will send me a postcard.